

Transient Luminous Events observed with the pinhole camera from Sierra Negra Volcano in Mexico

E. Ponce¹, S. Hernandez¹, H. Salazar¹, O. Martinez¹, R. Conde¹.

¹(Department of physics and Mathematics, Autonomous University of Puebla, Mexico)

ABSTRACT: *The next generation of experiments devoted to study extreme energy cosmic rays will be at space platforms. Recent satellite missions have shown that the UV light background is more complex than previous models. Therefore, the observation of transient luminous events TLEs at the upper atmosphere will be important, information about the time and space evolution of this very fast events may need to be recorded, this impose requirements of a wide field of view and the largest focus depth. The simplest optical design, a pinhole camera fulfills these characteristics. This pinhole camera have a multi anode photomultiplier, eight by eight pixels, that allow us to register 2d images of TLEs of about milliseconds. In this work, we present the observations of some events recorded from Sierra Negra Volcano in Mexico and its capabilities in order to use it as a monitoring device.*

KEYWORDS –UV light, atmosphere, pinhole, images, device.

I. INTRODUCTION

One of the important phenomena in night atmosphere, directly related to UHECR measurement One of the important phenomena in night atmosphere, directly related to UHECR measurement, are TLE (transient luminous events) characterized by very bright (energy in UV up to 0.1-1 MJ) short (duration of 1-300 ms) flashes. The “Tatiana” space detector but still the important characteristics did the first global measurements of UV flashes: the lateral distribution of UV glow in one flash and the energy spectrum of flashes are not measured. In this paper we present a new method of TLE measurement by the imaging pinhole camera. The presented pinhole camera is planned for operation in space experiments devoted to study of processes of electron acceleration in the atmosphere electric discharges and relativistic electron precipitation to the atmosphere from the magnetosphere among others.

II. PINHOLE CAMERA

The Camera obscura detector is the one of best optical imaging designs due to their simplicity wide field of view and large deep field [1]. We plan to operate it onboard a space mission satellite planed to orbit the earth at 700 Km height. The camera obscura it will be used to explore the eventual creation of perturbations near to the event

that may should trigger some TLE’s. This perturbation was considerate as background noise in the tracking of the cosmic ray original particle.

The high brightness of TLE may allow us to use the simplest pinhole optics for measuring the image in pixels of UV detector. The optimal imaging quality in a pinhole camera is achieved if the hole size is equal to the detector pixel size. Our aim is to measure not only the TLE image but also the temporal profile of the image with time resolution of about milliseconds. Today such a fast photo detector is available only as a Multi-Anode Photomultiplier Tube (MaPMT) with some number of pixels. The size of the pixel in MaPMT is of about 2-3 mm. Assuming the camera hole equal to this size [2] and taking the TLE UV intensity and time duration from it is possible to estimate the signals in the pixels of the pinhole camera. Efficiency of the MaPMT pixels to UV is around 20% for wavelengths $\lambda = 300-400$ nm and decreases below $\lambda = 300$ nm. For estimate of the TLE image signals the lateral distribution of UV intensity during the event it is needed.

We assume that UV flash images cover a circular area of some tens of km diameter (as it was measure in a typical TLE by video cameras, Fig. 1) with uniform intensity over the circle. So the total UV energy E_{uv} radiated by the TLE correspond to

the number of photons of wavelength $\lambda = 300-400$ nm. To improve the detection of TLEs, for this project we considered the configuration where the TLE whole area is observed by all pixels, in this setup a detailed image of the UV flash in space and time is obtained as it was suggested in [3] for EAS Cherenkov light observations.

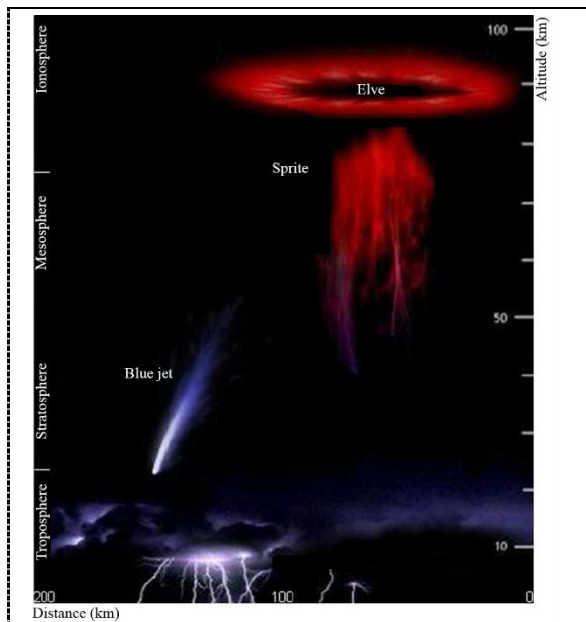


Figure 1. Some transient luminous events measured by video cameras. The images correspond to an elve, red sprite, and blue jet.

A scheme of the designed camera obscura it is shown in Fig. 2-4. In our case the design and construction of the camera obscura was made with the following technical parameters: one photo receiver MaPMT model H7546B (Hamamatsu) a matrix of 8 by 8 pixels with a pixel size of 2x2 mm. The pinhole have the same size, the focal distance f considered is $f=75$ mm. In the test and developing process of the camera obscure detector, as a first stage, we have performed several measurements at the Sierra Negra Volcano in Puebla-Mexico, at a height of 4200 meters above sea level approximately due to the small light pollution and less atmospheric absorption.

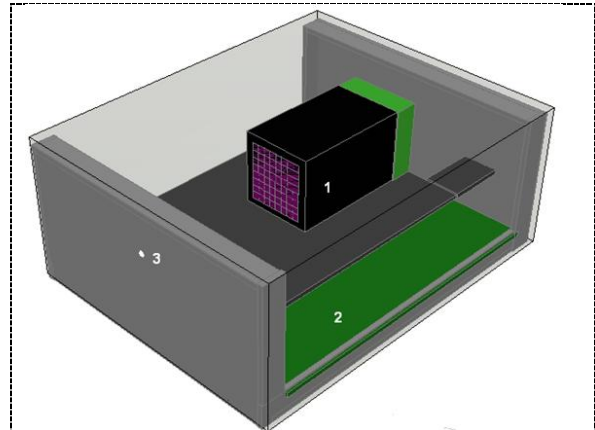


Figure 2. Camera obscura setup: 1 Photo receiver. 2 Electronic Board. 3 Pinhole.

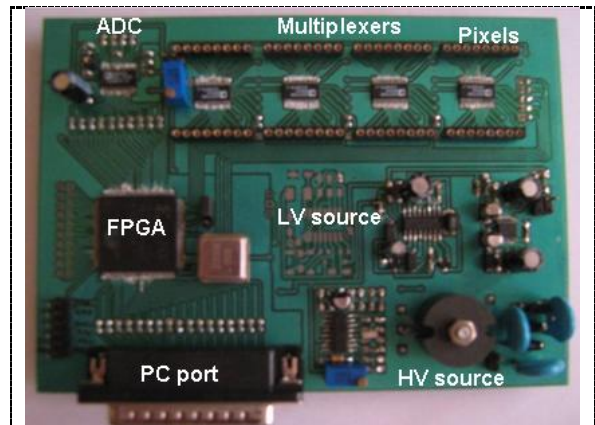


Figure 3. Camera obscura: electronic Board, all main parts.

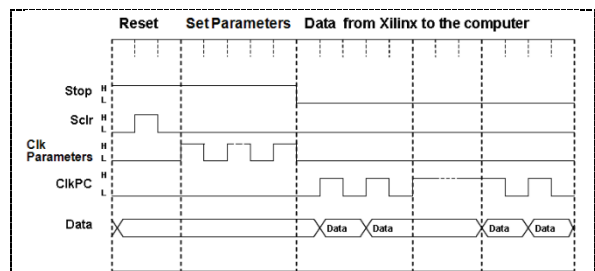


Figure 4. Camera obscura: Transmission and reception of data and commands between the camera obscura electronic board and a PC.

III. CAMERA ELECTRONICS

The Fig 5, shows the general block diagram used to the signal processing of MaPMT when a luminous event will appears. The board has as a main processor a FPGA Xilinx series. This FPGA control the multiplexing and the digitalization of the 64 analog signals from

MaPMT. Also, control and monitored the high voltage supplied to the MaPMT in order to protect it if a bright or long lasting event appears. The FPGA stores all the configuration and operation parameters from the PC and communicate it thru communication port.

The command controls of FPGA are defined by the user by software graphic programmable interface. With the same software, we construct a data base in order to process and plot the registered events.

The 64 pixels of MAPMT are digitalized with only one ADC. For this, we use an array of four multiplexers of type ADG706, where each multiplexer selects 1 signal from its 16 input signals, according to digital values applied for control multiplexing. Then with the array of 4 multiplexer boards we obtain and process every signal from MAPMT as shows in Fig6.

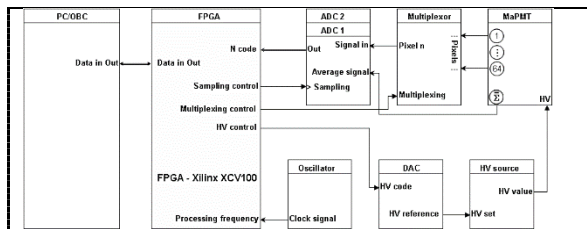


Figure 5. General electronic block diagram.

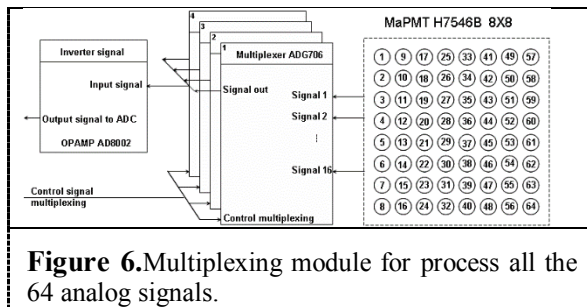


Figure 6. Multiplexing module for process all the 64 analog signals.

IV. CAMERA TESTING

As a first step in the calibration process of the Camera Oscura, it is necessary to measure the response to a single photo electron by the MaPMT [4], and use it to convert the signal to physical photon flux. To obtain the single photoelectron response, we have found the optimal operative voltage for the MaPMT used. To do this, we obtained the single photo electron (SPE) spectrum as a function of supplied voltage with a controlled

LED pulse. We selected 950V as operative voltage. From the analysis of some thousands events, we found the mean charge produced by a single photo electron response and the SPE pulse amplitude distribution. The designed pinhole camera after calibrated, was tested at mountain Sierra Negra in Puebla-Mexico located geographically at a height of 4200 meters above sea level approximately, Fig. 7, some results obtained are shown in Fig. 8-10.



Figure 7. Sierra Negra volcano (4300 m.a.s.l) in the background of the picture, you can see that on the horizon we have a clean atmosphere, free of clouds.

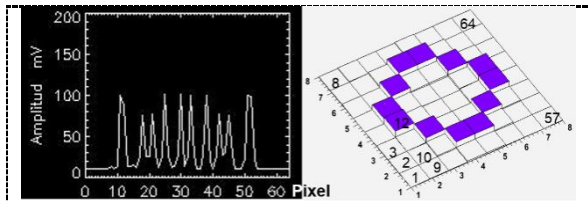


Figure 8. UV TLE registered with pinhole camera in a frame of 64 μ s. Amplitude of each pixel at lefth. At right TLE's image, the numbers correspond to the pixel.

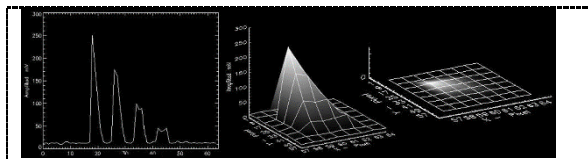


Figure 9. UV TLE registered with pinhole camera in a frame of 32 milliseconds. At lefth, amplitude of each pixel. At center, amplitude distributed in an array of 8x8. TLE's bright, at right.

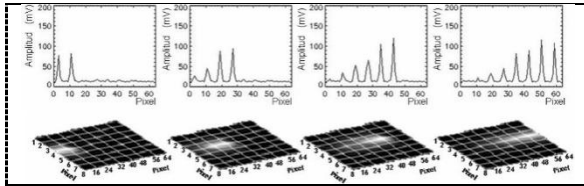


Figure 10. Possible micrometeorite trajectory observed during one second in the pinhole's field of view, in four frames of 0.25 seconds each one. Amplitude of each pixel, upper. TLE's bright, down.

Possibility to detect TLE at Mexican mountain station is demonstrated by map of TLE events registered onboard Tatyana-2 satellite, Fig. 11.

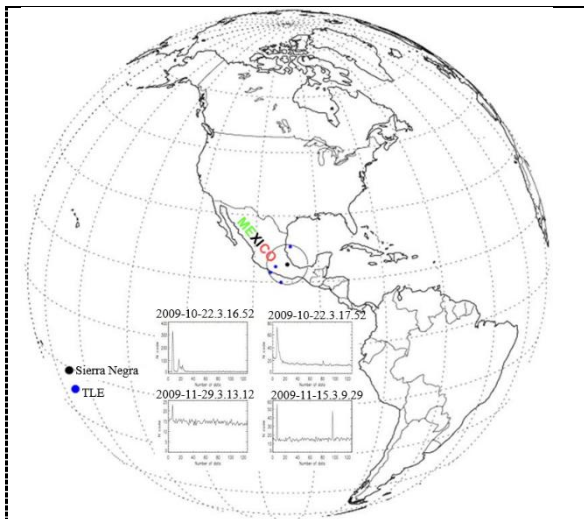


Figure 11. UV TLEs registered onboard Tatyana 2 Satellite, 1000 km around Sierra Negra-Mexico.

V. CONCLUSION

The pinhole camera design has shown to be a fruitful configuration for studies of background light level distribution presented in the atmosphere. The calibration and performance test at the Mexican mountain Pico de Orizaba and Sierra la Negra shows that its possible to detect with high confidence TLE and UV background light.

VI. Acknowledgements

The pinhole camera design has the important requirements for a device that is intended to be placed on satellites, such as the "SATEX 2", and the international space station "JEM-EUSO" mission.

REFERENCES

- [1] G. K. Garipov, Camera obscura for observation of EAS images in Cerenkov light, *J. Phys. G: Nucl. Part. Phys.* 20, Printed in the UK [1994].
- [2] G. K. Garipov, Camera obscura network: an array for registration of EAS Cerenkov radiation in the presence of high-intensity sky noise, *J. Phys. G: Nucl. Part. Phys.* 21, Printed in the UK.
- [3] Garipov G.K., Program of transient UV event research at TATIANA-2 satellite, *Journal of Geophysical Research*, 115.
- [4] Y. Kawasaki., Performance of a multi-anode photomultiplier employing a weak electrostatic focusing system (Hamamatsu R8900 series), *Nuclear Instruments and Methods in physics research A*, 564.